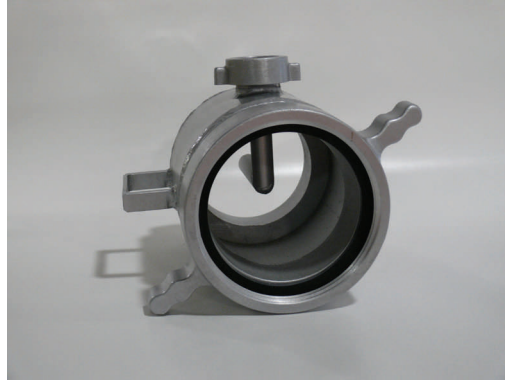


IN-LINE POWER JET SIPHON



The In-Line Power Jet Siphon is designed for use with two or more Fol-Da-Tanks. When the tanks are not close together, an In-Line Power Jet Siphon attached to two hard suction hoses assist water transfer from one tank to another. This keeps the main tank full of water for drafting as the secondary tank is refilled. In-Line Power Jet Siphons can also be used in ponds, creeks, or lakes to help transfer water to tankers and pumpers. The construction features include: durable al-mag alloy, aircraft quality tubing and 1 1/2" female assist by 4" - 6" discharge couplings. Standard threads are NST with other threads available. Storz and cam fittings are available upon request. NFPA 1142 compliant.

*Flow rates are based on using a 1/2" nozzle on a 1.5" hose. In addition to the estimated flow through the suction hose an additional 50-150 GPM can flow from the 1.5" transfer line.

Call for pricing.



FOL-DA-TANK COMPANY
P.O. BOX 110
MILAN, IL. 61264

WWW.FOL-DA-TANK.COM